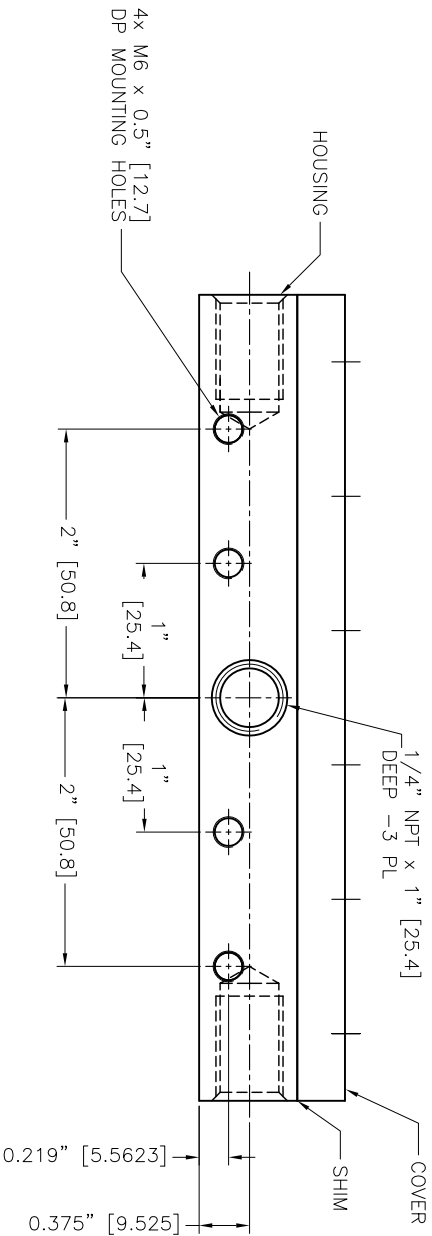
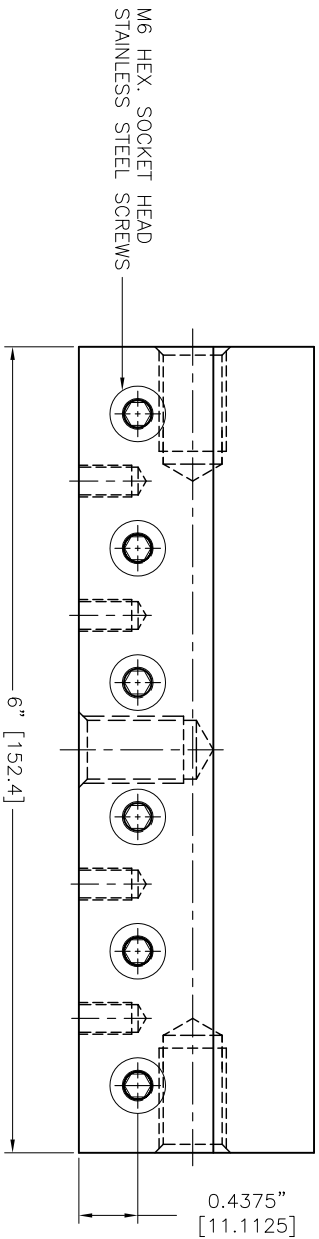
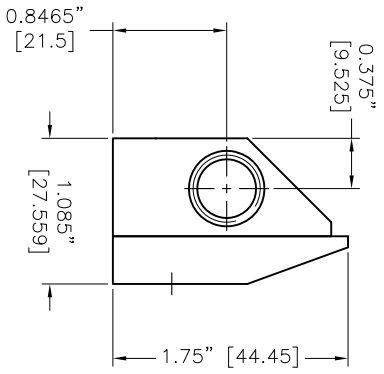


- NOTES:
- 1 ALL DIMENSIONS SHOWN ARE FINISH OPERATIONAL DIMENSIONS WHICH INCLUDE RESIDUAL COATINGS UNLESS OTHERWISE SPECIFIED.
 - 2 PART TO BE PACKED PROPERLY TO AVOID ANY DAMAGE WHILE SHIPPING & HANDLING.
 - 3 ALL HORIZONTAL DIMENSIONS ARE SYMMETRICAL ABOUT CENTER LINE UNLESS OTHERWISE SPECIFIED.



| | | | | | | | |
|--|--|---|--|-----------------------------|--|------------------|--|
| | | | | | | | |
| TEMP. ANGLE PROJECTION ALUMINIUM | | REQUIREMENTS - FINISHES OTHER FINISHES SPECIFIED BY CLIENT | | CONTRACT NUMBER - | | | |
| MATERIAL ALUMINIUM | | 1. DIM. USE IN UNITS (FEET) - | | CLIENT - | | | |
| FINISH - | | 2. DIMENSIONING AND TOLERANCING IN ACCORDANCE WITH ANSI Y14.5 (1982) - | | CONTRACTOR - | | | |
| PART NO. - | | 3. MAKE FINISH 125 MICRO INCH RMS & BREAK SHARP CORNERS .005 TO .015 - | | DATE 27/11/2013 | | | |
| NEXT ASSEMBLY - | | 4. HOLES IN ACCORDANCE WITH AMO 10397 - | | DESIGN S.PATIL | | | |
| USED ON - | | 1. LINEAR DIMS .001 .002 .005 .010 .020 .030 .040 .050 .060 .070 .080 .090 .100 .125 .150 .175 .200 .250 .300 .375 .500 .625 .750 .875 1.000 1.250 1.500 1.750 2.000 2.500 3.000 3.500 4.000 4.500 5.000 5.500 6.000 6.500 7.000 7.500 8.000 8.500 9.000 9.500 10.000 | | MANUFACTURING - | | SIZE - | |
| QTY PER PART NO. - | | 2. ANGLES ± 1/2° | | REVISIONS - | | | |
| QTY PER PART NO. - | | 3. ROUNDTOP .010 TR - | | ELECTRICAL - | | | |
| QTY PER PART NO. - | | 4. HOLES IN ACCORDANCE WITH AMO 10397 - | | SCALE 1:1 | | | |
| QTY PER PART NO. - | | 5. HOLES IN ACCORDANCE WITH AMO 10397 - | | CDR NO. XAK-06 | | | |
| QTY PER PART NO. - | | 6. HOLES IN ACCORDANCE WITH AMO 10397 - | | SHEET 1 OF 1 | | | |

NEX FLOW AIR PRODUCTS CORP.
 10520 YONCE STREET, UNIT 359-220, RICHMOND HILL, ON L4C 3C7
 TEL: (416) 410-1313 & FAX: (416) 410-1806 www.nex-flow.com

OUTLINE DRAWING OF
6" X-STREAM AIR BLADE AIR KNIFE

DWG NO.
 10006X